

# ANONYMOUS TABLATURE

Anonymous works in tablature are grouped by tuning, and, within each tuning, by source. As with the attributed tablature, there are many airs and dances of all types, especially in continental sources, these being evidence of a lively international traffic in this kind of music, throughout the seventeenth century.

Many pieces take the form, not only of virtuoso solos and duets, but also of simple settings of psalm tunes, chorales, and popular songs. Most of these are found in the two most common types of tuning: viol way (ffeff) and harpway sharp (defhf).

This section of the Index is the one in which chiefly fall the welcome contributions—concordances mainly for plucked strings, and corrections of errors—of François-Pierre Goy. Their manner of presentation is a consequence of their form on receipt, namely, index entries related to modern editions and publications.

The principal publications are in the series *Corpus des luthistes Français*, bibliographic keyword *CLF*. This is a national collection, grouped by composer, including the works of French lutenists of the 16th and 17th centuries.

For example, reference in the Index to Anon No. 6016, a Gigue, leads to an attribution to Dufaut and a number '158'. All further information, including that on sources, must thereupon be sought at No. 158 in the 'Dufaut' volume of CLF.

Where CLF numbers are not available, other numbers are used, particularly for Lully, for whom 'LWV' numbers, from Schneider's catalogue of the works—LULLY S—are quoted.

By rights, once an anonymous piece has been identified and attributed, its 'Anon.' number ought to lapse. However, that number is useful for cross-reference; consequently it is retained as an 'Ex-Anon' number, as is the case with No. 6016.

The listed concordances of a piece in tablature can fall under the following headings: (1) an exact replica, or (2) the same work in a different tuning, or (3) someone else's setting of the same tune. In many cases, category (3) seems appropriate. Whereas consort concordances can be presumed to have originated from the copying of part-books, it is conceivable that setters of tunes for recreation on the viol, lyra way, did it out of their heads. It is thus hardly surprising that settings of a tune, found in three or four different countries should be different, if independently set by several people in remotely dispersed households.

The details recorded and presented here, of mainly-French plucked-string concordances, constitute only a representative fraction of the repertoire. This is because of the great wealth of music; pieces are known which have up to 40 settings or concordances each. We hope that this limitation of intake will, without prejudice to the identification of anonymous works, keep the quantity of material under control.

### **‘Non-concordances’**

During compilation or revision of Index data, apparent concordances are detected and recorded. After further investigation, some of these have to be cancelled because, for instance, similar openings lead to different continuations; the consequence may be that the same detection, recording and discarding take place again at a later stage.

Accordingly, to prevent the same work being done twice, the following is a list of some ‘non-concordances’ which were noticed during the compilation of the Sixth Instalment of the Index.

ANON NO. OR NAME	DOES NOT CONCORD WITH ANON OR OTHER NO. OR NAME
6005	Hotman 26.
6028	D. Gaultier, Courante ‘Cephale’.
6031	6007.
6103	Brett’s Coranto.
6171	Anything by de Visée.
6228	Hotman 36.
6248	6308.
7855	Jenkins 386, 387.
8424	Hilton: Catch, ‘Call George again’.
8451	6163, 8575, Dubuisson 74.
9697	Mesangeau CLF No. 44.
Dubuisson 12	Pinel CLF NO. 26
Dubuisson 43	Pinel CLG No. 20.
Dubuisson 55	Pinel CLF No. 59.
Holst 21	Dubut CLF No. 20.
Hotman 42	Hotman 36.

# TUNINGS

Following consultation, the opportunity has been taken to re-order the anonymous tablature pages alphabetically. This will make pieces and tunings easier to find, but a disadvantage is that the VdGS numberings will be out of their original sequence. It is hoped the table below will help in recording current and future contents. The sequences of tablature pieces for individual composers remain untouched.

1. The tuning's number, as assigned by Traficante in LYRA T2
2. The tuning
3. Implied key, alternatives depend on the first string's tuning
4. Some of the names of tunings found in the sources, including:
  - (H) Hengrave Hall MS - GB-Cu MS Hen. Dep. (1)
  - (I) William Isles MS - GB-Ob MS Mus. Sch. F.575
  - (L) Leycester MS - GB-CHer MS DLT/B 31
  - (M) Merro MSS - GB-Ob MSS Mus. Sch. D.245-7
  - (B) Ballet MS - EIRE-Dtc MS D.1.21/1
5. 'Yes', anonymous pieces are known and listed in this tuning
6. VdGS numbers currently allocated to the tuning

Traficante No.	Tuning	Key	Names	Present in Anon. pages	VdGS Nos. currently allocated
50	dedeh	C	'The tuning sent me by Mr Roger Lestrangle 1670' (L)		
-	dedfh	e		Yes	8371
-	defde	G		Yes	7701-7712
1	defhf	G	Harp-way sharp	Yes	7001-7569
2	defhh				
3	dehff	C			
4	dehfh	C, a		Yes	8351-8352
5	dfedf	b/a	Common tuning flat	Yes	9921-9933
-	dfedh	b			
6	dfefh				
7	ededf	b/c		Yes	9901-9906
-	ededh				
8	edeff	A/Bb		Yes	9941-9945
9	edefh	D, Eb		Yes	8651-8668
10	edfed			Yes	9947-9948
11	edfhf	g	Harp-way flat	Yes	7801-8059
51	edfhh				
-	edhfh				
12	efdef	A/Bb	French sette, common tuning sharp; Banaster's way (L)	Yes	9751-9841

-	efdeh	A/Bb			
13	efdhf				
14	efffe	A/Bb , f, c	The new tuning to play alone (H); Drews tuning (I)	Yes	9601-9625
15	effff				
16	efffh				
17	effhf	Bb, g		Yes	9645-9668
18	efhfh	A		Yes	9351-9366
19	fdedf	b/c		Yes	9911
20	fdefh	D	High harp-way sharp; Another way by Bannester (L)	Yes	8401-8577
21	feded	Bb, g			
22	fedef	Bb, g		Yes	9681-9745
23	fedfh	d	High harp-way flat	Yes	8701-8939
24	fefde				
25	fefhf	F, f	Leero, lyra way, Bandora sett	Yes	8201-8331
-	fefhh	Bb, g			
26	ffcdh	e			
27	ffdef	A		Yes	6921
28	ffede	A			
29	ffedf	A, a, E, c		Yes	6901-6902
30	ffeec	B			
31	ffefc	Bb			
32	ffefd				
33	ffeff		Violl, plain, lute way	Yes	6001-6700 + more
49	ffefff				
34	ffefh	C,c			
46	fff	F	Horne=pipes	Yes	9951
35	fffed	e		Yes	6931
36	ffhfh	a	Alfonso Way; Alfonso way flat (L); 'treble set one note loer' (M)	Yes	9081-9246
37	fgdff				
38	fgdfh				
39	fhfcf				
40	fhfde	D			
41	fhfed				
42	fhfhe				
43	fhfhf	D, d	Eights, Octavo way (L);	Yes	9396-9481

			'the to higher strings violl way, the rest 8ts to them' (B)		
44	fhfhh				
47	fh	D	Bag=pipes	Yes	9961-9990
48	h(-)fh		Bag=pipes	Yes	9991
45	hfhfh		Alfonso, in fifties		

ANONYMOUS 222fh			No. of parts	Key	S-Skma MS Tabul- atur No. 3 f.	
VdGS No. (Rudén No.)*	* See SWEDEN R					
8371 (700)	Air		1	e	61 inv.	

2003

A-dedfh-1

# ANONYMOUS defde

VdGS  
No.

(Ruden  
No.) - see SWEDEN R

No. of parts

Key

A-ET  
goëss  
MS  
'A'

S-  
Skma  
MS  
Tabul-  
atur  
Nr. 3

f./  
seq

f.  
inv

7701

Almande  
(given as defdd)

1 G

49v/  
(107)

7702

Courante

1 G

50r/  
(108)

7703

Sarabande

1 G

50v/  
(109)

7711  
(890)

Air (Solen)

1 G

67:1

7712  
(275)

Så skjon.  
Morgenstierna

1 G

66

ANONYMOUS defhf			No. of parts	Key	PLAYFORD T	D-Kl MS	F-Pc MS	GB-Cfm MS	Cu MS	CHER MS	Mp MS	NTu	Ob MSS Mus Sch	GB-Lbl Add.	S-[K1] MS	S-L MS	S-Skma MS	US-NH MS	GB-En	GB-Lbl MS	GB-Lbl MUS.	seq. f.	
Nos. 7001-6 from PLAYFORD MB 1651 and later editions (some early ones are in fefhf tuning (see PLAYFORD T))						4 <sup>o</sup> Mus 108 Vol. 3	Rés 1111	647	Dü 6.48	DLT/B 31	832 Vu 51	Leyden MS	F. 572	F. 575	F. 578	63,852	21,068	Q. 35	Tablatur No. 3	Filmer 3	SUTHERLAND	249	GB-En, P637 R787.1
			no.	no. f.	no. f.	P. inv.	f.	f.	Tun. no. P.	no. f.	P.	f. inv.	f.	f. inv.	f. inv.	P.	f. inv.	f.	p.	S/q.	seq. f.		
Thumping Almaine																							

Handwritten musical notation for a 3/4 time signature. The melody consists of eighth and quarter notes: C4, E4, F4, A4, G4, F4, E4, D4, C4. The bass line consists of quarter notes: C3, E3, G3, A3, G3, F3, E3, D3, C3. The piece is labeled '7007' at the bottom.

d. d. d.      d. d. d.

a a a a a a b a

7008

Handwritten musical notation on a five-line staff. The notation includes notes (quarter, eighth, and sixteenth notes), rests, and bar lines. Below the staff, the number "7009" is written.

Handwritten musical notation for the first system, featuring a treble clef and a key signature of one flat (B-flat). The melody is written on a five-line staff. The notes are: A4 (quarter), A4 (quarter), A4 (quarter), G4 (quarter), F4 (quarter), E4 (quarter), D4 (half). The bass line is written on a five-line staff. The notes are: A3 (quarter), A3 (quarter), A3 (quarter), G3 (quarter), F3 (quarter), E3 (quarter), D3 (half). The system ends with a double bar line.

[illegible]

Handwritten musical notation on a four-line staff. The notation includes notes, rests, and accidentals (sharps and flats). The notes are written in a cursive style. The staff is divided into four measures by vertical bar lines. The first measure contains a quarter note 'f', an eighth note 'a', a quarter note 'c', and a quarter note 'a'. The second measure contains a quarter note 'a', a quarter note 'b', a quarter note 'a', and a quarter note 'a'. The third measure contains a quarter note 'a', a quarter note 'b', a quarter note 'b', a quarter note 'b', a quarter note 'b', and a quarter note 'a'. The fourth measure contains a quarter note 'c', a quarter note 'e', and a quarter note 'a'. There are also some additional notes and accidentals written above the staff.

Handwritten musical notation on a five-line staff. The notation includes notes and rests, with some notes labeled with letters: 'a', 'c', 'a', 'b', 'c'. The notes are arranged in a sequence across the staff, with some notes beamed together. Below the staff, the number '7014' is written.

Handwritten musical notation for a 3/4 time signature. The notation is written on a five-line staff. The first measure contains three eighth notes (a, a, a) beamed together, with a '3' written below them. The second measure contains a quarter note (a) and an eighth note (c) beamed together. The third measure contains three eighth notes (b, b, b) beamed together, with a '3' written below them. The fourth measure contains a quarter note (a) and an eighth note (c) beamed together. The notation is written in a simple, handwritten style.

Handwritten musical notation on a five-line staff. The notation includes notes (quarter, eighth, and sixteenth notes) and rests. Below the staff, the letters 'a', 'b', 'c', 'f', and 'g' are written, corresponding to the notes above them. The letters are arranged in a sequence that matches the notes: a, a, a, a, b, b, b, b, b, b, c, a, c. The letters are written in a stylized, handwritten font.

d.1

a c e f a c a b a

7017

Handwritten musical notation on a five-line staff. The notation consists of two measures. The first measure contains the notes A, A, C, B, with a slur over the last two. The second measure contains the notes A, A, A, with a slur over the last two. Above the notes are some markings that look like 'd' and 'a'. Below the staff, the number '7018' is written.

Handwritten musical notation for a 3/4 time signature. The melody consists of eighth and quarter notes. The bass line includes a 7/8 time signature and a 7/4 time signature. The notes are labeled with letters: a, c, a, b, a, b, a, c, a.

[illegible]

Handwritten musical notation on a five-line staff. The notation includes notes (quarter, eighth, and sixteenth notes) and rests. Below the staff, the letters 'a', 'b', 'c', and 'd' are written, corresponding to the notes above them. The notation is written in a cursive, handwritten style.

7022

Handwritten musical notation on a five-line staff. The notes are: D, D, D, 2, 2, 2, D, D, D. Below the staff, the letters 'c', 'c', 'c', 'c', 'c', 'c', 'c', 'c' are written. The number '3' is written below the staff. The number '7023' is written below the staff.

Handwritten musical notation for a 3/4 time signature. The notation is written on a five-line staff. Above the staff, there are four notes: a quarter note, a dotted quarter note, an eighth note, and a sixteenth note. The staff contains four measures, each with a whole note. The notes are: G, A, A, A; C, C, C, C; A, C, A, B; and D, C, E. Below the staff, the number 7024 is written.

Handwritten musical notation on a five-line staff. The notation includes notes and rests, with some notes beamed together. Below the staff, the number "7025" is written.

[illegible]

Handwritten musical notation for a 3/4 time signature. The melody consists of the notes: A4 (quarter), A4 (quarter), A4 (half), G4 (quarter), F4 (quarter), E4 (half), D4 (half), C4 (half). The lyrics are: a a a a b a b a c a. The piece is numbered 7027.

[illegible]

Handwritten musical notation on a five-line staff. The notation includes notes, rests, and accidentals. Below the staff, the number 7029 is written.

Handwritten musical notation on a three-line staff. The notes are: *f* (first line), *e* (first line), *c* (first line), *a* (first line), *b* (second line), *a* (second line), *c* (second line), *a* (second line), *a* (second line), *a* (second line), *f* (first line), *e* (first line). The notes are grouped into measures by vertical bar lines. The first measure contains *f*, *e*, *c*, *a*, *b*, *a*. The second measure contains *c*, *a*, *a*, *a*. The third measure contains *f*, *e*. The notes are written in a cursive style.

Handwritten musical notation on a five-line staff. The notes are: quarter note G4, quarter note A4, quarter note B4, quarter note C5, quarter note B4, quarter note A4, quarter note G4. Below the staff, the notes are labeled with letters: 'g' under G4, 'a' under A4, 'b' under B4, 'c' under C5, 'b' under B4, 'a' under A4, and 'g' under G4. The number '7031' is written below the staff.

Handwritten musical notation for "7032":

Melody line: ♯ D | D | ♯ 2 | 2 | 2 | ♯  
Lyrics: [a] c c b a  
Bass line: C | a e a d | f | f | f |  
Fingering: 3 f f a

7033

Handwritten musical notation on a three-staff system. The notes are: f, e, a, c, a, b, a, a, a, b, a, c, a. The first staff contains the notes f, e, a, c, a, b, a. The second staff contains the notes a, a, a, b, a, c, a. The third staff contains the notes a, a, a, b, a, c, a. The number 7034 is written below the first staff.

Handwritten musical notation for a 5-measure piece. The notation is written on a five-line staff. The notes and rests are as follows: Measure 1: Quarter note 'd' (middle line), Quarter rest, Quarter note '2' (first space), Quarter rest, Quarter note 'd' (middle line). Measure 2: Quarter note 'f' (second space), Quarter note 'h' (third line), Quarter note 'k' (third space). Measure 3: Quarter note 'a' (first space), Quarter rest, Quarter note 'e' (second space), Quarter note 'a' (first space). Measure 4: Quarter note 'c' (first space), Quarter rest, Quarter note 'a' (first space), Quarter note 'a' (first space). Measure 5: Quarter note 'a' (first space), Quarter rest, Quarter note 'a' (first space), Quarter note 'a' (first space). The piece is marked with a common time signature 'C' and a key signature of one flat 'b'. The tempo is marked '7035'.

↓ ○ ↓ ○ ↓ ○ ↓ ○ ↓ ○ ↓ ○ ↓ ○ ↓ ○

C |            a c c | e |            e |

3 a |            a |            c |            |

7036

ANONYMOUS defhf -continued		No. of parts	Key	A-ET goëss MSS		D-KL MSS 40 Mus 108 vols:					FIRE-DM MS Z 3.5.13 f inv	SUTHERLAND P.	CONCORDS & ATTRIB'NS		
vdqs Anon No.				A	B	2	3	3	4	5			=vdqs Anon		vdqs
				seq	seq	f.	no.	f.	f.	f.			No.	Attr.	No.
7081	Allemande	1	G	(46)											
7082	[sarabande]	1	G		(95)										
7091	Courente	1	G			80'									
7095	Ballet	1	G				92	54':2	-		4:1	concordances at 7018			
7096	Ps 116 Ich lob	2	G				94	55'	32'						
7097	Ps 84	1	G				97	57	-						
7101	Ps 32 'o seelig'	1	G				106	61'	-						
7102	[Ballet]	1	G				107	62'	-						
7103	[Ballet]	1	G				108	63	-						
7104	Ballet	1	G				109	63'	-				7014		
7105	Allem [ande]	1	G				111	64'	-						
(7111)	Gavotte	1	G							42':1			(Deutekom)	8	
(7112)	Gavotte	1	G							42':2			(Deutekom)	9	
7131	Pavan	1	G							75':63					
7132	[Almain]	1	G							64					
7133	New Yeares Gift	1	G							60					
7134	[Almain]	1	G							58'					
7135	[Almain]	1	G							58:1					
7136	[Coranto]	1	G							58:2					
7137	[Almain]	1	G							57'					
7138	[Almain]	1	G							57					

ANONYMOUS defhf - continued		No. of parts	Key	PLAYFORD T	GB- Cu MS	CHEr MS	DU	LbI Add MSS		NTu MS	OB MSS Mus Sch.		SUTHERLAND	PLAYFORD CMA 1662, MH 1663					
VdGS No.					DLT/B 6.48 31	Blackie MS		56279	59869	Leyden	F.572	F.575							
					no.	f.	f.	no., p.	f.	f.	no., f.	P.		f.	p.	no.			
PLAYFORD MRLV 1652-5 AND LATER EDITIONS :																			
7007	Lesleye's March = Anon No. 7268	1	G	140															
7008	Cavaliers Hornpipe	1	G	64				1669 :	'Scottish ...'										
7009	A Merry Hough	1	C	10															
7010	Maydens Rant	1	G	191				1682	'The Maid's ...'										
7011	Canaries	1	G	31									7						
7012	The Apollo	1	G	250				also GB-LbI, MS MUS. 249, seq. (25)											
7013	Saraband.	1	G	77															
7014	Brangle Devilage = Anon. 7104	1	G	205				1669, 82 :	'A French Ayre'										
MRLV 1661 AND LATER:																			
7015	Saraband	1	G	54															
7016	Vive le Roy	1	G	28							89 inv								
MRLV 1669 AND LATER:																			
7017	A short Prelude	1	G	165				1682: 'A Prelude of the Notes Ascending and Descending											
7018	Maying Time = Anon No. 8207	1	G	166				1682: 'Fain I would'	6' *										
7019	Parthenia	1	G	87															
7020	The King's Delight	1	G	32	1' □ 8' ⊕						82 ⊕								
7021	The Simerons Dance ☒	1	G	113				1682: 'Prince Ruperts welcome'						279, 38					
7022	Mackbeth	1	G	89				7, 5:3	34' *	27, 19	25	10:1							
7023	Come jump to my cousin & kiss	1	G	128				1682: 'Come kiss me my sweet Kate'											
7024	The Scots March	1	G	5				112, 6	1682 & Blackie: 'Montrose March'.										
7025	Green-Goose Fair	1	G	95															
7026	The Pleasant Dream	1	G	199				1682: 'An Ayre' ‡											
7027	Montrosses March	1	G	116															
7028	The Prince of Condie's March ⊗	1	G	275															
7029	Toll, toll, gentle bell	1	G	200	15'	120' *			14' :1										
7030	Fourth Lesson with a Thump	1	G	208				1682: 'Ayre'											
7031	The Merry, Merry Milkmaids	1	G	92	14														
7032	Follow me, Kate	1	G	112															
7033	A Prelude	1	G	185															
7034	An Ayre	1	G	211	23' +			+ Hampton Court Ayre		78									
7035	Saraband	1	G	34															
7036	A Jig	1	G	94															
‡ 7026, based on Air 'O trop heureux (Boësset 1624, f. 21').																			
* fefhf    * ffeff ☒ c.f. Locke, PLAYFORD CMA 1662, no. 279; MH 1663, no. 38.																			
□ duple time    ⊕ triple time.																			
⊗ 7028 also in GB-LbI Eg MS 2046, f inv 47:2, 'The King's March (lute).																			

### Additions to A-defhf-3

- No. 7018: other versions at 7095, 7421, 8207, 8307, 8308.  
No. 7020: 'The Kings Kettie' in GB-En, P637 R787.1, f. 1v, seq. (3)  
No. 7022: 'Mackbeth' in GB-En, P637 R787.1, f. 2r, seq. (5)

defhf

7037

7038

7039

7040

7041

7042

7043

7044

7045

7046

7047

7048

7049

7050

7051

7052

7053

7054

7055

7056

7057

7058

7059

7060

7061

7062

7063

7064

7065

7066

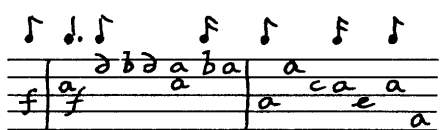
7067

7068

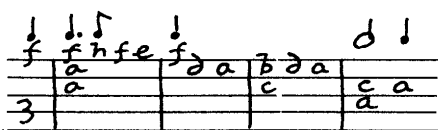
7069

ANONYMOUS defhf - continued		No. of parts	Key	PLAYFORD T no.	GB- Cu MS Dd 6.48	DU MS Blackie MS	LbL Add MS 59869	NT <sub>0</sub> Leyden MS	LbL Add. 63852 f. inv	US- NH MS Filmer MS		
VdGS No.												
MRLV 1682 only:												
7037	The Apes Dance in the Opera	1	G	86				13' + :3	+ 'at the 2nd opera'			
7038	General Monk's March	1	G	228								
7039	The Hobby Horse Dance	1	G	130	35'	0	0 'The Hobby Horse'					
7040	Cuckolds all a Row	1	G	127								
7041	A Scotch Tune called Sawney	1	G	163				16:1	x x 'Sawney was tall'			
7042	Oh the bonny Christ Church Bells	1	G	184				15:2	72, 42			
7043	New Minuet	1	G	126								
7044	Jocky went to the Wood	1	G	70					56, 34'			
7045	Ah cruel bloody fate	1	G	252								
7046	The Granadees March	1	G	236								
7047	Sitting beyond the river side	1	G	276								
7048	The Myrtle Shade	1	G	2					57, + 35	+ 'Hail to the Mirtle Shade'		
7049	Now the Fight's done	1	G	84								
7050	The Earl of Sandwich's farewell	1	G	137								
7051	New Minuet	1	G	4								
7052	Bore	1	G	159						0 'Scotch Tune'		
7053	Bonny Brow	1	G	279		80, 2:1	15:1	50, x 31	x x 'The bony Browne'			
7054	Sweet Jane	1	G	81			16' 0 :2	0 preceded by 'The Ground to Sweet Jane'				
7055	Minuet	1	G	18								
7056	Dragoon's March	1	G	158								
7057	Mr. Farmer's Trumpet	1	G	164								
7058	Minuet	1	G	13								
7059	Mardike	1	G	85				* 34/ :3		18/ of Tr.		
7060	A Round O	1	G	235								
7061	Ayre	1	G	260								
7062	A Jigg	1	G	44								
7063	The Joy of all Hearts	1	G	136								
7064	Amarillis	1	G	218								
7065	New Muttar $\Phi$	1	G	210				31/ :3		80/ 17r of Tr.		
7066	Oxford Tune	1	G	209				*		※		
7067	Abington Jigg	1	G	121								
7068	Come boy fill us &c.	1	G	71								
7069	Let Oliver now be forgotten	1	G	135								
$\Phi$ Not same as 'Nue Muttar' 7215      * ffeff      ※ fefhf.												

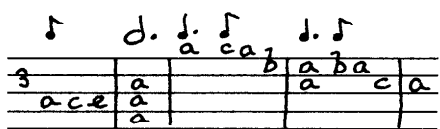
defhf



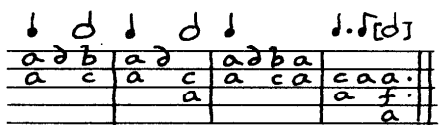
7081



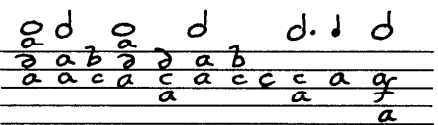
7082



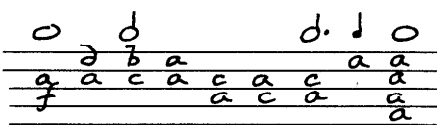
7091



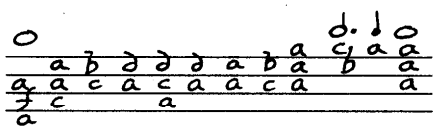
7095



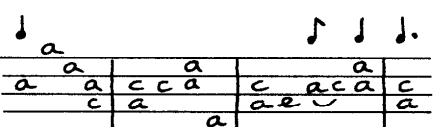
7096



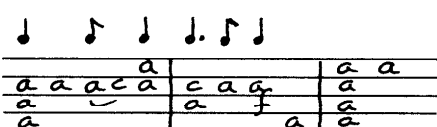
7097



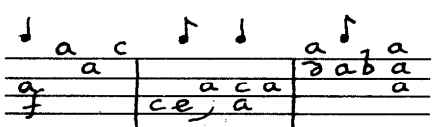
7101



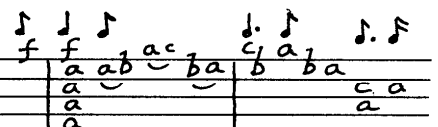
7102



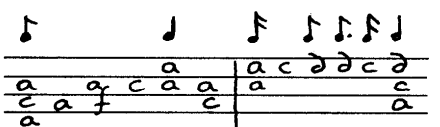
7103



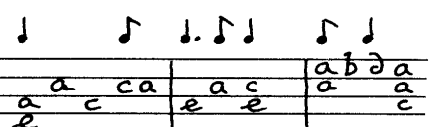
7104



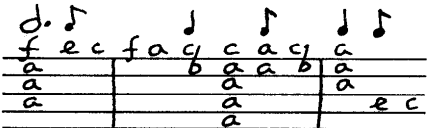
7105



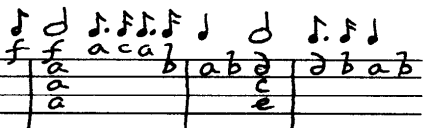
7111



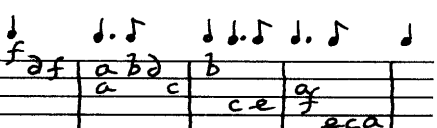
7112



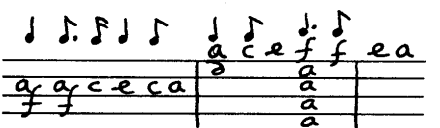
7131



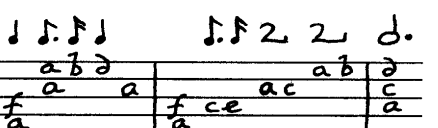
7132



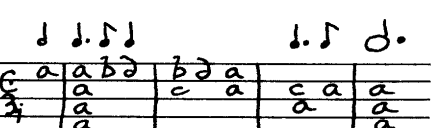
7133



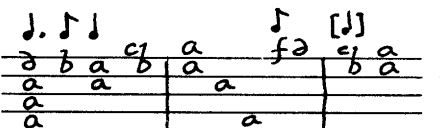
7134



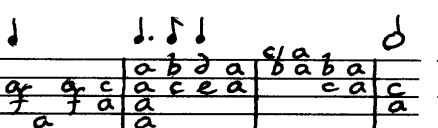
7135



7136



7137



7138

A-defhf-6

ANONYMOUS defhf -continued		No. of parts	Key	A-ET goëss MSS		D-Kl MSS 4 <sup>o</sup> MUS 108 vols:					IRL-Dm MS Z 3.5.13 f <sub>inv</sub>	SUTHERLAND P.	CONCORDS & ATTRIB'NS		
Vdgs Anon No.	A			B	2	3	3	4	5	=Vdgs Anon			Attr.	Vdgs No.	
	f./ seq.			f./ seq.	f.	no.	f.	f.	f.	No.					
7081	Allemande	1	G	19v/45											
7082	[Sarabande]	1	G		85v/93										
7091	Courante	1	G			80'									
7095	Ballet	1	G				92	54':2	-		4:1	concordances at 7018			
7096	Ps 116 Ich lob	2	G				94	55'	32'						
7097	Ps 84	1	G				97	57	-						
7101	Ps 32 'o seelig'	1	G				106	61'	-						
7102	[Ballet]	1	G				107	62'	-						
7103	[Ballet]	1	G				108	63	-						
7104	Ballet	1	G				109	63'	-				7014		
7105	Allem[ande]	1	G				111	64'	-						
(7111)	Gavotte	1	G							42' :1			(Deutekom)	8	
(7112)	Gavotte	1	G							42' :2			(Deutekom)	9	
7131	Pavan	1	G							75' 63					
7132	[Almain]	1	G							64					
7133	New Yeares Gift	1	G							60					
7134	[Almain]	1	G							58'					
7135	[Almain]	1	G							58:1					
7136	[Coranto]	1	G							58:2					
7137	[Almain]	1	G							57'					
7138	[Almain]	1	G							57					

September 2013

# defhf

7151

7152

7153

7154

7155

7156

7157

7161

7165

7166

7167

7171

7172

7175

7176

7180

7191

7195

ANONYMOUS Defhf - continued		No. of parts	Key	F-Pc MS Rds IIII	GB- CHE, MS DLT/B 31	Cu MS Hen Dep 77(1)	
Vdqs No.				no., f.	f.	no., P.	
7151	Praeludium	1	G	12, 11'			
7152	Allemande	1	G	13, 12'			
7153	Courant	1	G	14, 13'			
7154	Sarabande (& variations)	1	G	16, 15'			
7155	Allemand	1	G	17, 16'			
7156	Courant	1	G	18, 17'			
7157	Sarabande	1	G	21, 19'			
7161	Allemande	1	G	—, 70'			
7165	Wie lang, O Gott	1	G	91, 83			
7166	Seelchen was ist schönes	2?	G	92, 83'			
7167	Wohl Ach was ist doch unser Leben	1	G	95, 89'			
7171	Praeludium	1	G	186, 171'			
7172	[Air]	2	G	196, 179'			
7175	Ballet 3 [tuned to c']	2	F	[218], 202'			
7176	[Ballet 4] "	2	F	[219], 203'			
7180	Sarabande	1	G	[243], 249'			
7191	[Coranto]	1	G		77'		
7195	[Pavan]	1	G			16, 1	

<p>7201</p>	<p>7202</p>	<p>7203</p>
<p>7204</p>	<p>7205</p>	<p>7206</p>
<p>7207</p>	<p>7208</p>	<p>7209</p>
<p>7210</p>	<p>7211</p>	<p>7212</p>
<p>7213</p>	<p>7214</p>	<p>7215</p>
<p>7216</p>	<p>7217</p>	<p>7218</p>
<p>7219</p>	<p>7220</p>	<p>7221</p>
<p>7222</p>	<p>7223</p>	<p>7224</p>
<p>7225</p>	<p>7226</p>	<p>7227</p>
<p>7228</p>	<p>7229</p>	<p>7230</p>

ANONYMOUS defhf - continued				QB-Cu MS Dd	LBL Add MS	OB MS Mus Sch	
VdQS No.				6.48 f.	59869 f.	F.575 f. inv	
7201	Saraband	1	G	1			
7202	Singelton Slip	1	G	5'			
7203	[Coranto]	1	G	6':1			
7204	[Coranto]	1	G	6':2			
7205	① An Ayre ② The First Saraband	1	G	7' ①		90 ②	
7206	The Old Woman's Dance	1	G	9'			
7207	A Jygge	1	G	10'	14':2		
7208	[Jig]	1	G	11			
7209	[Saraband]	1	G	11'			Not same as Pigges of Rumsey 9984
7210	Peg Ramsey	1	G	13			
7211	Come, love, follow to the Spring	1	G	13'			
7212	The Earle of Essex last goodnight	1	G	15			
7215	Nue Muttar	1	G	21			end of piece = Anon 7065
7216	The Scottish Warr	1	G	21'			
7217	Lamberts fall	1	G	24			
7218	[Coranto]	1	G	25			
7219	A French Ayre	1	G	25'			= Lawes Jig No. 422
7220	[Jig]	1	D	26'			
7221	[Jig]	1	G	27	16:3		
7222	A Jygge	1	e	29'			
7223	The Trumpetts Call	1	G	31'			
7224	The Bells [Whittington Chime]	1	D	32'			
7225	The Trumpett Almaine	1	G	33'			
7226	The Trumpett	1	G	34'			
7227	[Almaine]	1	D	35			
7228	[Coranto]	1	G	36'			
7229	[Jig]	1	G	37			
7230	Gavote	1	G	37'			

7241

7242

7243

7251

7252

7253

7254

7255

7257

7258

7259

7260

7263

7264

7265

7266

7267

7268

7269

7271

7272

7273

7274

ANONYMOUS defhf - continued		No. of parts	Key	GB-Cu MS Nn 6.36 f.	DU MS Blackie 1692 (C19 copy) no., P.	SUTHERLAND p.	S-N MS Finspang 9096.3 seq.	GB -En P637 R787.1	
Vdqs No.									
7241	[Almain]	1	G	15:1					
7242	Fortune	1	G	15:2					
7243	Allmain	1	G	15:5					
7251	Jockie wed a owing go	1	G		9, 3:5		not same as Anon 7352 not same as Paget		
7252	The old man's wish	1	G		13, 8:2				
7253	Lavinion Shore	1	G		19, 5:1				
7254	Hold away from me, Donald	1	G		21, 5:2				
7255	Drumlenrick's Ayre/welcome home	1	G		37, 7:1			31r (67)	
7257	The new way of owing	1	G		40, 7:3				
7258	The last time I came over the Moor	1	G		43, 8:1				
7259	[The Beech Tree]	1	G		48, 6:4				
7260	Now we are met	1	G		57, 1:1				
7263	John come kiss me now	1	G		65, 7:4	15	(2)		
7264	My Lord Aboyn's Ayre	1	G		72, 4:1				
7265	Tow to Spine	1	G		90, 4:5				
7266	Binny's Jig	1	G		93, 2:2				
7267	In January last	1	G		94, 2:5				
7268	Lady Binny's Lilt	1	G		96, 2:3				
7269	For sake of Gold she left me	1	C		97, 4:2				= Anon. 7007
7271	Hoptons Jigg	1	G		101, 2:4	16:1			
7272	Sheugare Candie	1	G		102, 4:4				
7273	New Cornriges	1	G		104, 5:6				
7274	Kind Robin	1	G		106, 5:4				

7281

7284

7287

7290

\_\_\_\_\_

\_\_\_\_\_

\_\_\_\_\_

\_\_\_\_\_

7301

7304

7307

7310

7313

7316

7282

7285

7288

7291

\_\_\_\_\_

\_\_\_\_\_

\_\_\_\_\_

\_\_\_\_\_

7302

7305

7308

7311

7314

7317

7283

7286

7289

---

---

---

---

7303

7306

7309

7312

7315

7318

ANONYMOUS defhf - continued		No. of parts	Key	GB-WOhe MS LM1083/ 91/35		Lb1. Add MS 59869		NTU MS Leyden		Lb1, Add. MS 63.852		PLAYFORD MH 1689	SUTHERLAND	GB-En, P637 R787.1	
VdQS No.				P.	f.	no.	f.	no.	f.						
7281	A Skotch Tune	1	G	4											
7282	[Skotch Tune]	1	G	5											
7283	the dragoons march	1	G	6											
7284	A short prelud[e]	1	G	7											
7285	allman	1	G	8											
7286	[corant]	1	G	9											
7287	Saraband	1	G	10											
7288	[Jig]	1	G	11											
7289	[Saraband]	1	G	12											
7290	A new Skotch tune	1	G	14											
7291	[Lilliburlero]	1	G	27								24			
7301	[almaine]	1	G		6 <sup>1</sup> :1 <sup>1</sup>										
7302	Corant	1	G		6 <sup>1</sup> :2										
7303	Sarabrand	1	G		6 <sup>1</sup> :3										
7304	An Ayre	1	G		7:1										
7305	A Sarabrand	1	G		7:3										
7306	[almaine]	1	G		7 <sup>1</sup> :1										
7307	Sarabrand	1	G		7 <sup>1</sup> :2										
7308	Sarabrand	1	G		7 <sup>1</sup> :3										
7309	A Jigge	1	G		10 <sup>1</sup> :2										
7310	Prelude	1	G		11:1										
7311	Prelude	1	G		11 <sup>1</sup> :1										
7312	[almaine]	1	G		12 <sup>1</sup> :2										= Anon. 7332 and 7435
7313	[coranto]	1	G		13:1										
7314	[ayre]	1	G		13 <sup>1</sup> :1										
7315	The Duke of Lorraine's March	1	G		13 <sup>1</sup> :2	19/15									
7316	Jigg	1	G		14 <sup>1</sup> :3										
7317	A Scottish Tune	1	G		16:2										
7318	The Ground to Sweet Jane	1	G		16 <sup>1</sup> :1										see Sweet Jane 7054

defhf

7325

7326

7332

7332

7336

7341

7351

7352

7353

7354

7355

7356

7357

7358

7359

7360

7361

7362

7363

7364

7366

7367

7368

7369

7370

A-defhf-16

7371

7372

ANONYMOUS - defhf - continued				GB-Ob MSS Mus Sch				NTu	DU	SUTHERLAND
Vdqs No.				D245	F572	F575	F578	MS Ley- den	MS Blac- kie C19 copy	
		No. of parts		P.	P.	f.	f.	no., f.	no., P.	
7325	[Ayre]	1	G	204 : 2						
7326	[Jig] [defhh]	1	G	205 : 1					= Anon. 7461	
7332	The King [of] Swedens March [not same as Anon 7474]	1	G		80				= Anon. 7312 and 7435	
7336	[Prelude]	1	G			11': 2				
7341	[Almain]	1	G				21'			
7351	King James's March to Ireland	1	G				2, 7'	2, 6:1		
7352	The old mans wish [not same as Anon 7252]	1	G				3, 8			
7353	A March	1	G				4, 8'			
7354	Killiecrankie	1	G				5, 9			
7355	Saraband	1	G				6, 9'			
7356	A jig	1	G				7, 10			
7357	Over the Mure to Maggie	1	G				9, 11			
7358	A Minivet	1	G				10, 11'			
7359	A french march	1	G				11, 12			
7360	My Dearie if thou Dye	1	G				12, 12'	12, 7:2		
7361	Robin and Jonnet	1	G				13, 13			
7362	Money in both yr pockets	1	G				14, 13'			
7363	The Ladys Gounne	1	G				15, 14			
7364	Bonnie Nannie	1	G				16, 14	14, 3:2	p. 23:2	
7366	Yet Maggie I must love thee	1	G				20, 15'	23, 8:3		
7367	Where Hellen Lays	1	G				21, 16	25, 8:4		
7368	The dance of it	1	G				22, 16'		p. 9	
7369	Strick upon a Strogin	1	D				25, 18			
7370	Hallo Even [Halloween?]	1	G				26, 18'			
7371	Katharine ogie	1	G				28, 19'			
7372	What shall I do to show	1	G				29, 20	= Purcell, from 'Dioclesian'		

[illegible]

Handwritten musical notation for the second staff. It features a treble clef, a key signature of one sharp (F#), and a 3/4 time signature. The melody consists of eighth and quarter notes. The lyrics 'a a c d b c d b d e e d' are written below the staff, with 'a' under the first measure and 'a' under the second measure. The number '7376' is written below the staff.

Handwritten musical notation on a five-line staff. The notation includes notes, rests, and accidentals. Below the staff, the letters 'a', 'b', 'c', and 'd' are written, corresponding to the notes above them. The letters are written in a stylized, handwritten font. The letters 'a' and 'b' are written below the first two measures, 'c' and 'd' below the next two measures. The letters are written in a way that suggests they are part of a sequence or a list.

Musical notation for the first staff of 'The Rose Tree'. It consists of a single line with a treble clef. The notes are: quarter note G4, quarter note A4, quarter note B4, quarter note G4, quarter note F#4, quarter note E4, quarter note D4, quarter note C4. The notes are grouped into four pairs of beamed eighth notes.

Handwritten musical notation on a five-line staff. The notation includes notes, rests, and accidentals (sharps and flats). Below the staff, the number 7379 is written.

[illegible]

Handwritten musical notation on a five-line staff, divided into three measures by vertical bar lines. The notes are written as letters with accidentals:   
 Measure 1: e, c, #a   
 Measure 2: e, c, a, c, e, #c (with a 'c' above the second 'e')   
 Measure 3: e, c, #a   
 Below the staff, the number "7381" is written.

Handwritten musical notation on a five-line staff. The notes are: E (first line, sharp), E (second line), C (third line), A (third space), C (first space), A (second space), G (second line), A (first space), A (second space), C (third line), A (third space). Above the notes are slurs and fingerings: 'f' above the first C, 'c' above the first A, 'c' above the second A, '2' above the G, and 'c' above the final A. Below the staff is the number '7382'.

Handwritten musical notation on a five-line staff. The notes are: C (quarter), C (quarter), A (quarter), C (quarter), G# (quarter), E (quarter), C# (quarter). The notes are grouped into four measures: C | C A | G# E | C. There are some additional markings: a 'c' below the first C, a 'c' below the second C, a 'c' below the third A, a 'c' below the fourth C, a 'c' below the fifth G#, a 'c' below the sixth E, and a 'c' below the seventh C. The number '7383' is written below the staff.

e# a c a c | a e | # a c a c

7384

[f]     [d.]     [c.]  
a b    a    c b e f h  
a    a    a    a c

7385

Handwritten musical notation for a piece in G major, 2/4 time. The melody is written on a single staff with notes and rests. The bass line is written below the staff with letters 'a', 'b', 'c', and accidentals. The piece ends with a double bar line and a repeat sign.

Handwritten musical notation for a 4-part setting of "The Rose Tree" (1888). The notation is on a four-staff system. The first staff has a treble clef and a key signature of two flats (B-flat and E-flat). The melody begins with a half note G4, followed by a half note A4, and then a half note B4. The second staff has a bass clef and a key signature of two flats. The melody begins with a half note G3, followed by a half note A3, and then a half note B3. The third and fourth staves have a bass clef and a key signature of two flats. The melody begins with a half note G3, followed by a half note A3, and then a half note B3. The notation includes various musical symbols such as clefs, key signature, and note values.

♪

aa	aa	bb	aa
a—	a—	c	a—

7389

Handwritten musical notation on a three-staff system. The notes are:  $a_h$ ,  $f_h$ ,  $e_h$ ,  $\sharp c_a$ ,  $\sharp c_a$ ,  $a_h$ ,  $f_h$ ,  $e_h$ . Below the notes are the letters:  $h$ ,  $h$ ,  $e$ ,  $a$ ,  $a$ ,  $h$ ,  $h$ ,  $a$ .

Handwritten musical notation on a four-line staff, showing a sequence of notes and rests. The notes are labeled with letters:  $\frac{a}{a}$ ,  $\frac{a}{a}$ ,  $\frac{a}{a}$ ,  $\frac{a}{a}$ ,  $\frac{b}{b}$ ,  $\frac{a}{a}$ ,  $\frac{c}{c}$ , and  $\frac{a}{a}$ . The notation includes a key signature change from one sharp to two sharps, and a common time signature. The notes are grouped by slurs and beams, indicating a melodic line.

Handwritten musical notation on a five-line staff. The notes are: a, a, c, a, b, b, b, #, b, a, #, c, a, b. The notes are written on the lines and spaces of the staff. The first measure contains the notes a, a, c, a. The second measure contains the notes b, b, b, #, b, a. The third measure contains the notes #, c, a, b. The notes are written in a cursive style. Below the staff, the number 7392 is written.

ce fec aca

7394

Handwritten musical notation on a five-line staff. The notation consists of a sequence of notes: a quarter note (A), a quarter note (C), a half note (A), a quarter note (C), a quarter note (A), a quarter note (C), a quarter note (A), and a quarter note (C). The notes are written on the lines and spaces of the staff. Below the staff, the notes are written in a shorthand notation: 'a c a c a c a c'. The first 'a' is on the first line, 'c' on the first space, 'a' on the second line, 'c' on the second space, 'a' on the third line, 'c' on the third space, 'a' on the fourth line, and 'c' on the fourth space. The shorthand notation is written in a cursive style.

Handwritten musical notation on a five-line staff. The notation includes notes (d, b, a, c#, a, a, a, a, d, d) and rests, with a treble clef and a key signature of one sharp (F#). The notes are written on the lines and spaces of the staff, with some notes beamed together. The key signature is indicated by a sharp sign (#) on the F line. The notation is written in a cursive, handwritten style.

Handwritten musical notation on a five-line staff. The notes are:  $\underline{a} \underline{b} \underline{d} \underline{d} \underline{d}^c$  (first measure),  $\underline{d} \# \underline{a} \underline{b} \underline{b} \underline{b} \underline{d} \underline{b} \# \underline{a}$  (second measure). The notes are grouped with horizontal lines and a slur. The number 7399 is written below the staff.

fa

7400

7401

7402

Handwritten musical notation on a five-line staff. The notation consists of three measures. The first measure contains the notes  $\sharp e$  and  $f$ . The second measure contains the notes  $\sharp c$  and  $a$ . The third measure contains the notes  $c$  and  $\sharp c$ , with a circled  $a b \flat a$  written above the staff. Below the staff, the number "7403" is written.

Handwritten musical notation on a five-line staff. The notes are:  $\sharp a$ ,  $\sharp a$ ,  $\underline{c a}$ ,  $\underline{a b}$ ,  $\overset{c}{a}$ ,  $\underline{c c}$ ,  $\underline{e}$ , and  $\sharp c a$ . The first two notes are beamed together, and the next four notes are also beamed together. The final note is written below the staff.

Handwritten musical notation on a five-line staff. The notes are: a, f, c, e, a, b, a, c, e, e. There are accidentals: a sharp sign above the first 'a', a sharp sign above the first 'c', and a sharp sign above the first 'e'. There are also some handwritten markings above the notes: a '3' above the first 'a', a '2' above the first 'c', and a '2' above the first 'e'. The staff is divided into measures by vertical bar lines.

Handwritten musical notation on a five-line staff:

Notes: a, c, e, c, e, c# (with a sharp sign), c, e, e, #a, e

Handwritten number: 7406

Handwritten musical notation on a five-line staff:

Notes: e, f, e, c, e, a, #c, e, e, c, e, f, e

Fingering: a (under the second 'c')

\_\_\_\_\_

\_\_\_\_\_

\_\_\_\_\_

\_\_\_\_\_

---

---

---

---

ANONYMOUS Defhf - continued				GB-NTU MS Leyden	DU MS Blackie 1692 (C 19 copy)	SUTHERLAND	GB-En, P637 R787.1	
Vdqs No.				no., f.	no., P.	p.	p. seq	
7373	Happie man is he	1	g	30, 20'				
7374	New Heiland Lad[d]ie	1	G	31, 21	10, 3:1			
7375	If loves a sweet passion	1	g	32, 21'				
7376	Celia that I once was blest	1	g	33, 22		from Purcell, 'Amphitryon' (Z572/9a)		
7377	When cold storms is past	1	G	34, 22'				
7378	Womens work will never be done	1	G	35, 23				
7379	The prince of walles [his] welcome to the world	1	g	36, 23'		Not same as Anon 7477		
7380	The Seven Bishops	1	g	37, 24				
7381	McLeans Scots Mesure	1	D	38, 24'				
7382	Jocke ye Laird's Brother	1	D	39, 25	39, 5:5			
7383	Vallent Jockie	1	D	40, 25'				
7384	The prince of walles march	1	G	41, 26				
7385	Ane Ayer	1	G	42, 2 '				
7386	No Scornfull Beauty	1	G	43, 2				
7387	Young phaon	1	G	44, 27'				
7388	Bonnie Lassie	1	G	45, 28	63, 3:4			
7389	Jennie I told you	1	G	46, 28'				
7390	The new kirk Gabel	1	G	51, 31'				
7391	Saraband	1	G	52, 32				
7392	Allman	1	G	53, 32'				
7394	Adew to ye follies & pleasures of love	1	G	58, 35'				
7395	Montrose Lyns	1	G	59, 36	52, 6:3	18	2v (8)	
7396	The watter of Boyne	1	G	67, 40				
7397	Sweet Willie	1	G	68, 40'	68, 1:4 69, 1:5	fdefh defhf		
7398	Bony Roaring Willie	1	G	69, 41	70, 1:6			
7399	A Spanish Jigg	1	G	71, 42				
7400	No charmes above her	1	G	73, 43				
7401	Twide Syde [Tweed Side]	1	G	75, 44				
7402	When she came ben	1	G	77, 45				
7403	I cannot wine at her	1	G	78, 45'				
7404	A horn pyp	1	G	79, 46				
7405	The Kings health in a Mugg	1	G	80, 46'				
7406	full fa my eyes	1	G	81, 47				
7407	A Minive[t]			76, 44				

defhf

7411

7412

7413

7414

7415

7421

7423

7424

7425

7426

7427

7428

7429

7430

7431

7432

7433

7434

7435

7436

7437

7438

7439

7440

7441

7442

7443

7444

7445

7446

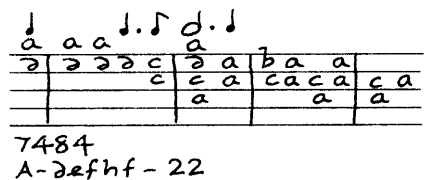
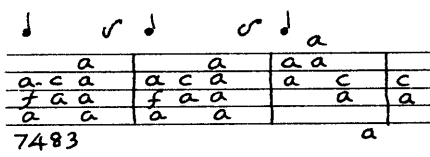
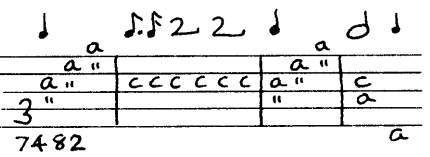
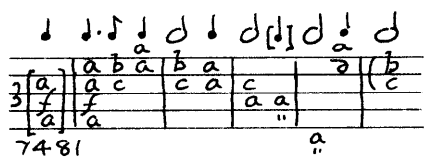
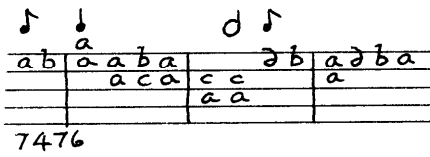
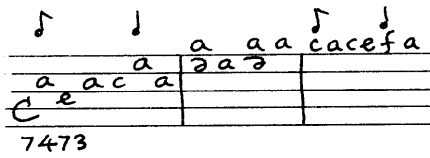
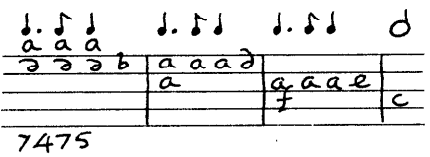
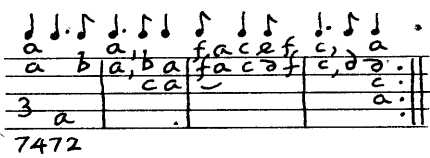
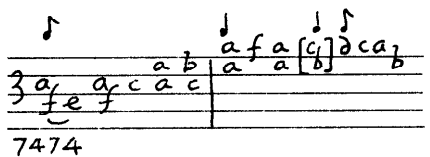
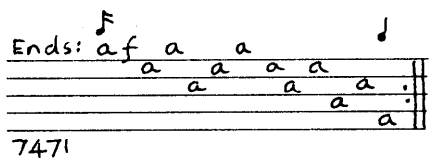
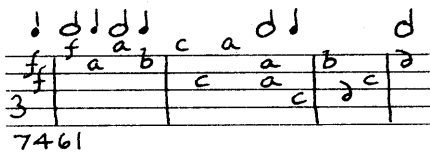
A-defhf-20

7447

ANONYMOUS defhf -continued		No. of parts	Key	GB-Lb1 Add ms 63852		CHER MS	Lb1 Add MS	SUMARTE no.	CONCORDANCES and ATTRIBUTIONS		
Vdgs Anon No.				Viol f.	kbd f.	DLT/B 31	f. 59869		= Vdgs Anon No.		Vdgs No.
7411	The Canaries	1	G	37'	Griffith Boynton MS	Leycester MS	15'	Cartwright MS			
7412	[Saraband]	1	G	38'							
7413	[Jig]	1	G	39							
7414	[Almain]	1	G	39'							
(7415)	Preludium	1	G	40						(Mace)	5
				f. inv							
7421	Shepherds Hay	1	G	117:1					see 7018 for other concordances		
7423	[Coranto]	1	G	116':2							
7424	The English Lan[...]	1	G	116':3							
7425	I am a poor & harmless maid	1	G	116':1							
	[another setting]	1	G	115':2							
7426	A Mock or Eccho	1	G	114:1						[Ives]	57
7427	A french tune	1	G	110:1	15				①		
7428	Monkes Charge	1	G	110:2							
7429	Coranto	1	G	109:1						(Ives)	47
7430	[Coranto]	1	G	109:2						(Ives)	48
7431	A French Coranto	1	G	108':1	7'						
7432	[Almayne]	1	G	108':2							
7433	Almayne	1	G	107'							
7434	Sarabrand	1	G	107.							
7435	Raoria[...]	1	G	99':2					7312, 7332		
7436	Swedlands Martch	1	G	91':1							
7437	Coridon	1	G	91':2							
7438	My lady Banberries hornpipe	1	G	91:2	29'						
7439	Princes Birth	1	G	90'							
7440	Daphne	1	G	89:2		149:1 edfhf		16	②		
7441	When love with unconfined wings	1	G	88':1							
7442	The round	1	G	87							
7443	[Coranto]	1	G	80:2							
7444	[Coranto]	1	G	79':1							
7445	[Ayre]	1	G	79':2							
7446	[Coranto]	1	G	79':3					③		
7447	[Coranto]	1	G	78							

① = 'Baise moi ma Jeanneton': many settings, among them CH-BEsa MS HA nr. 123 p.133 inv. (lute). ② and many other settings. ③ Division of Anon No. 7444.

Defhf



ANONYMOUS defhf/h - continued			No. of parts	Key	GB-Lam MS 600 f.	S-L MSS Wenster		
VdGS No.	Rudén No.					G. 28 P.	G. 35 no, P.	
7461		Saraband [defhh]	1	C	5'			= Anon. 7326
7471		fragment: end of [Prelude]	1	G		1:1 F		
7472	964	Saraband & Double	1	G		1:2		
7473	412	La Mariée	1	G		2		= Lully LWV 19/3
7474	1141	Passep: Royall	1	G		4		
7475	487	Ouverture	1	G		6		= Lully LWV 60/6
7476	210	[Bourrée ?]	1	G		11		
7481	1135	Bohus Belägrung	1	G			4, 5	
7482	1050	Marche	1	G			7, 11	
7483	211	Air	1	G			8, 13	
7484		Non danket alle Gott	1	G			11, 16	

Handwritten musical notation on a five-line staff. The notation includes notes, rests, and accidentals (sharps and flats). Below the staff, there are handwritten letters and numbers: 'b', 'a', 'f', 'e', 'ca', 'e', '7501'.

7501

Handwritten musical notation on a five-line staff. The notation includes notes with stems and flags, and rests. The notes are labeled with letters: c, a, f, a, b, f, e, c, a, b, a, b. The notes are grouped into measures by vertical bar lines. The first measure contains the notes c, a, f. The second measure contains the notes a, b, f. The third measure contains the notes e, c, a. The fourth measure contains the notes b, a, b. The notes are written in a style that suggests a specific rhythm, with some notes having flags or beams. The handwriting is in blue ink on a white background.

7502

♩. ♩ ♩

$\frac{9}{7} f e a c c a \quad f \quad e \quad a \quad c \quad f e^a c$

7503

7503

Handwritten musical notation on a five-line staff. The notation includes various notes (quarter, eighth, and sixteenth notes) and rests. Below the staff, there are handwritten letters and symbols: 'a a c d d', 'c a c', 'd', 'c a', 'a', 'c', 'a a f d', 'a'. At the bottom left, the number '7504' is written.

7504

Handwritten musical notation on a five-line staff. The notation includes notes and rests, with some notes having a 'c' above them. The notes are: a, b, d, d, b, b, d, a, a, c. Below the staff, the letters 'a', 'e', 'c', and 'a' are written in a row, corresponding to the notes above them. The number '7505' is written at the bottom left.

7505

[illegible]

7506

[illegible]

7510

75.2

35.3

d

a	c	e a	e g	h <sup>o.d</sup>	h	f
a	c	a	a	h	h	f
a	c	a	a	h	h	f

7514

7514

Handwritten musical notation for the first staff of 'The Rose Tree'. The melody is written on a five-line staff. The notes are: a (quarter), b (quarter), a (quarter), a (quarter), a (quarter), r (quarter), a (quarter), e (quarter), r (quarter). Above the staff, there are two musical symbols: a single eighth note and a beamed eighth-note pair. The lyrics 'The Rose Tree' are written below the staff.

7515

7511

ab | a a a a | a a a a |

7517

Handwritten musical notation on a five-line staff. The notes are: a, c, e, f, a, c, b, b, a, a. Below the staff, the letters 'a', 'c', 'a', 'c' are written under the notes a, c, a, c respectively. The number '7521' is written below the staff.

7521

Handwritten musical notation for a 3-measure exercise. The notation is written on a five-line staff. The notes and rests are as follows:

- Measure 1: Quarter note G (G4), quarter note A (A4), quarter note C (C5), quarter rest.
- Measure 2: Quarter note A (A4), quarter note A (A4), quarter note B (B4), quarter note C (C5).
- Measure 3: Quarter note A (A4), quarter note B (B4), quarter note A (A4), quarter note B (B4).

Below the staff, the notes are written in a simplified, shorthand notation:

- Measure 1: G, A, C, (rest)
- Measure 2: A, A, B, C
- Measure 3: A, B, A, B

7522

Handwritten musical notation for a 4-measure exercise. The notation is written on a five-line staff. The notes and rests are as follows:

- Measure 1: Quarter note A (below staff), Quarter note C (below staff), Quarter note B (below staff), Quarter note A (below staff).
- Measure 2: Quarter note A (below staff), Quarter note C (below staff), Quarter note A (below staff), Quarter note B (below staff).
- Measure 3: Quarter note A (below staff), Quarter note C (below staff), Quarter note A (below staff), Quarter note B (below staff).
- Measure 4: Quarter note A (below staff), Quarter note C (below staff), Quarter note A (below staff), Quarter note B (below staff).

2500

Handwritten musical notation on a five-line staff. The notes are: G4, A4, B4, A4, G4, F#4, E4, D4. Below the staff, the notes are written as letters: g, a, b, a, b, a, a, c, c, c, a, a. The first four notes (g, a, b, a) are grouped under a bracket labeled '7524'. The last four notes (a, c, c, c) are grouped under a bracket labeled 'a'. The final note 'a' is also labeled 'acefc' above it.

7524

Handwritten musical notation on a five-line staff. The notation includes notes, rests, and a bar line. Below the staff, the letters 'a', 'f', and 'a' are written, along with a bracketed 'a' and a '7525'.

7525

kh f e f a c a, a

	a	b	a	b	a	a	a
			c	c	a	a	a
				a			a

7526

7526

Handwritten musical notation on a five-line staff. The notation includes notes (quarter, eighth, and sixteenth notes), rests, and accidentals (sharps and flats). The notes are labeled with letters: f, a, e, c, b. The staff is divided into measures by vertical bar lines. The first measure contains a half note 'f' and a half note 'a'. The second measure contains a quarter note 'f', an eighth note 'e', and a sixteenth note 'c'. The third measure contains a quarter note 'f', a quarter note 'a', an eighth note 'b', and a sixteenth note 'a'. The fourth measure contains a quarter note 'b' and a half note 'c'. The fifth measure contains a quarter note 'c' and a half note 'b'. The sixth measure contains a quarter note 'b' and a half note 'c'. The seventh measure contains a quarter note 'c' and a half note 'b'. The eighth measure contains a quarter note 'c' and a half note 'b'. The ninth measure contains a quarter note 'c' and a half note 'b'. The tenth measure contains a quarter note 'c' and a half note 'b'. The eleventh measure contains a quarter note 'c' and a half note 'b'. The twelfth measure contains a quarter note 'c' and a half note 'b'. The thirteenth measure contains a quarter note 'c' and a half note 'b'. The fourteenth measure contains a quarter note 'c' and a half note 'b'. The fifteenth measure contains a quarter note 'c' and a half note 'b'. The sixteenth measure contains a quarter note 'c' and a half note 'b'. The seventeenth measure contains a quarter note 'c' and a half note 'b'. The eighteenth measure contains a quarter note 'c' and a half note 'b'. The nineteenth measure contains a quarter note 'c' and a half note 'b'. The twentieth measure contains a quarter note 'c' and a half note 'b'. The notation is written in black ink on a white background.

7531

[illegible]

7532

[illegible]

3533

Handwritten musical notation on a five-line staff. The notes are: a (quarter), f (quarter), h (quarter), f (quarter), e (quarter), f (quarter), e (quarter), f (quarter), a (quarter), a (quarter), a (quarter), g (half). The notes are written on the first line (a), second line (f), third space (h), second line (f), first space (e), second line (f), first space (e), second line (f), first space (a), first space (a), first space (a), and first line (g). The number 7534 is written below the staff.

7534

A-defhf-24

535

ANONYMOUS defhf - continued			No. of Parts	Key	US-LAuc MS M286 M4 L992	SM MS EL25A 46-51 (cantus book)	S-[K1] MS 21.068	S-Skma Tabul- atur No. 3	D-WRa Mus VIII:12 [last 3 pieces] no numbers
VdGS No.	Ruden No. *	* see SWEDEN R			f.	f.	f. inv	f. inv.	
7501		[Coranto]	1	C	2				
7502		[Coranto]	1	G	2'				
7503		[Prelude]	1	G	3				
7504		Goe thy ways	1	G	3'				
7505		[Almaine]	1	G	4'				
7506		[Almaine]	1	G	12' and 22'				
7511		[Ayre]	1	G		1, 1', 4			
7512		Madman	1	G		5:1			
7513		A Boate, a Boate	1	G		5:2 (arr. of Jenkins)			
7514		[chorale], 2 settings	1	D		34', 35'			
7515		Courante	1	G					[1]
7516		Aria	1	G					[2]
7517		[Allemande]	1	G					[3]
7521	230	Gavot	1	G			26'		
7522	193	Marche	1	G			26:1		
7523	1065	Menuet	1	G			26:2		
7524	183	Bourée de dauphin	1	G			25'		
7525	321	Bourée	1	G			25		
7526	441	Bourée [du Comte de Logy]	1	G			24		
7531	923	I Marken Satt	1	G				63'	
7532		Air	1	G				63	
7533		Menuet	1	G				62'	
7534	326	Güge [Gigue]	1	G				62	
7535	168	Masquerad	1	G				61'	

ANON (2efhf) pieces from SUTHERLAND

VdGS No.	P.	VdGS No.	P.
7545	1:2	7551	8
[Illegible]		[Aminitas] harp sharp.	
7546	2:1 8 12	7552	12:2
John Hays bony Lasy harp sharp		[Doney Cristan harp sharp]	
7547	3:2	7553	14:2
Ane Ayr harp sharp = Ives junior, VdGS No. 1		the Milken pealle harp sharp	
7548	4:2	7554	22:2
[fragment]		A Tige yorkins	
7549 = 7210	5:1	7555	23:1
Bony Peggie Ramsay harp sharp		[the abay hall] harp sharp]	
7550 = 7002	5:2		
[Hamod afraur] harp sharp			

No. 7553: also in GB-En, P637 R787.1, f.5v, seq. (16) (rhythms included)

missing

7560

7561

7563 =MACE 5

7564

7565

7566

7567

7568

7569 =MACE 6

7570

7571

7572

7573

7574

7575

7576

7577

7578

7579

7580

7581

ANONYMOUS defhf - continued		no. of parts	Key	GB- Lbl MS MUS. 249	GB- En P637 R787.1	
VdGS Anon No.						
				seq.	f./seq	
7560	Saraband	1	G		]	Leicester Record Office, DE 3502 Fragments. See Chelys 30, pp.38-46
7561	[Country dance?]	1	G			
7563	Prelude	1	G	(17)		=MACE 5
7564	Courante	1	G	(19)		
7565	Sarabande	1	G	(20)		No rhythmic signs
7566	Courante	1	G	(21)		=COLEMAN 452
7567	[Courante]	1	G	(23)		No rhythmic signs
7568	[Untitled]	1	G	(26)		No rhythmic signs
7569	Air	1	G	(28)		=MACE 6
7570	[Untitled]	1	G	(29)		No rhythmic signs
7571	Prelude	1	G	(35)		No rhythmic signs
7572	[Almande]	1	G	(36)		
7573	[Untitled]	1	G	(31a)		
7574	Corant to Duke of Lorraine's March	1	G		2v (7)	
7575	Canaries	1	G		3v (10)	variant of 7411
7576	Almain Le Roy	1	G		22r(50)	
7577	Corant Le Roy	1	G		22v(51)	
7578	Amarillis English Amarilles	1	G		25v(57) 33r(73)	not 7064
7579	Drum henrick's welcome home	1	G		31r(67)	
7580	Sandie shall never be my love again	1	G		33v(75)	
7581	What if a day	1	G		4v (11)	GB-CHEr DLT/B 31, f.7r [ffhfh]; 53r [ffeff] =Sumarte GB-Mp 832 Vu 51, p.12 [ffeff] no. 12 GB-Lbl, Add. 63852, f.114inv:2 [defhf]

ANONYMOUS Aehfh			No. of parts	Key	S-Skma MS Tabulatur No. 3 f.	
VdQS No. (Ruden No.)*	* See SWEDEN R					
8351 (107)	Praelud[ium]	<p>Handwritten musical notation for Praelud[ium] on a five-line staff. The notation consists of a single melodic line with notes and accidentals: B-flat, B, A, C, B, C, D, F, A, C, D, A, B, A. There are also some lower notes or fingerings indicated below the staff.</p>	1	C	3'	
8352 (312)	Gavott	<p>Handwritten musical notation for Gavott on a five-line staff. The notation consists of a single melodic line with notes and accidentals: B-flat, A, B, A, C, D, F, C, F, D, C, A, G, D. There are also some lower notes or fingerings indicated below the staff.</p>	1	C	7'	

Handwritten musical notation for measures 9921 through 9935. The notation includes notes, rests, and lyrics (a, c, e, f) on a five-line staff. Some measures include performance instructions like '3', '4', and 'unmeasured'.

9921

9922

9926

9927

9928

9929

9930

9931

9932

9933

9934

9935

November 2011

DFEDF01

ANONYMOUS ðfeðf			No. of parts	Key	A-ET goëss MS 'C' seq.	F-Pc MS Ré's IIII		GB-Mp MS 832 Vu 5I		Ob MSS Mus Sch		S-Skma Tab. Nr. 3 f.	GB-SA 38740/2 f.
VdGS No .	Rude'n No. *	* see SWEDEN R				no.	f.	Tun, No.	P.	D. 245 P.	F. 572 P.		
9921		Allemande	1	a		[237]	244'						
9922		Sarabanda	1	a		[239]	246						
9926	492	Allamand	1	b								30'	
9927	1228	Courant	1	b								31'	
9928	1354	Saraband [& double]	1	b								32'	
9929	1252	Saraband [& double]	1	b								33	
9930	630	Güque	1	b								33'	
9931	714	Dagen ifrånoss	1	b								f. inv. 67:2	
9932	710	O gudh	1	b								65'	
9933	547	[Chorale]	1	b								60'	
9934		Preludem											10v
9935		Almaine											11r