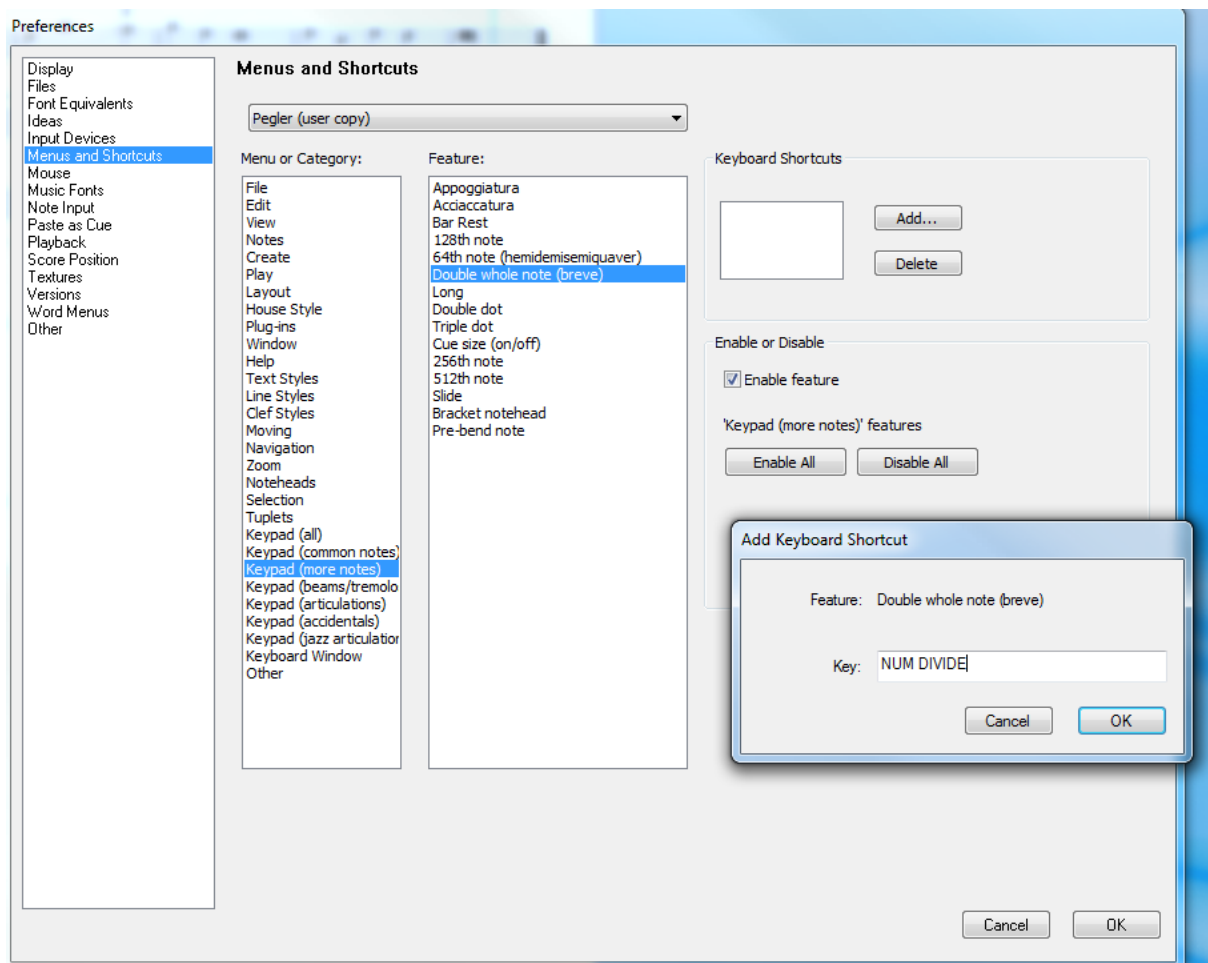


Adding keypad keys for Breve and Long

When entering notes on the computer keyboard the common note values are on keypad 1, the rest are on keypad 2. When you have a lot of breves and longs (double and quadruple whole notes) it can slow things down quite a lot having to change keypads all the time. My solution is to assign the / and * keys to breve and long. Select Keypad – Preferences > Menu and Shortcuts

- Select /Keypad more notes/Double note or Breve/ then press a key – e.g. / key on keypad (the first time you do this it will ask you to provide a new name for the set, second time it will allow you to add it, with a warning).
- Do the same for Long and use * key on keypad.



The only problem with this is that it affects all the keypads, so you lose Staccato & Tenuto, acciaccatura & pre-bend note, no-beam and stemlet, arpeggio up and down, and double flat – I can live without these most of the time, but if you are setting more recent music you can easily revert to the standard menus in the drop down list in Preferences>Menu and Shortcuts

You can also use this method to assign keyboard short cuts for plug-ins such as “Add ficta above note” – I use cntrl # and cntrl shift # which don’t seem to be used by Sibelius for anything else.